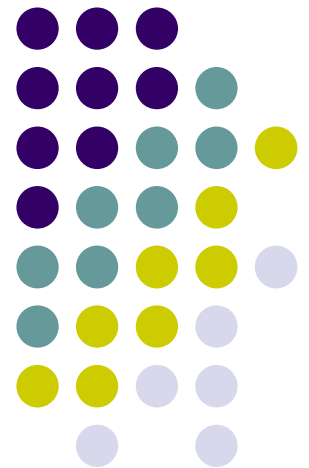
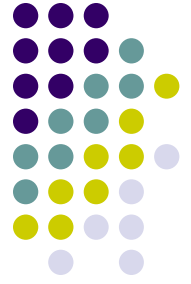


BSNL 3G Datacard Modem

How to Connect ?
How to See internet ?





Prerequisites

- BSNL 3G Datacard USB Modem
- BSNL 3G Enabled SIM Card
- PC With Windows XP or Higher OS



1. Insert SIM in Modem

- Remove the cap (which is printed with BSNL 3G Sticker) & insert the SIM, following the instructions shown below the cover
- Place the Cover back



2. Connect to PC

- Connect the Modem to Any USB Port of PC
- A “Red” Light will glow for few seconds & then it will turn to “Green” colored light
- If the light is “Red” Light doesn’t change , Means The SIM is not inserted properly

3. BSNL 3G Program Loading



- When Modem is connected...
- On first use : A Program named “BSNL 3g” will install itself on PC
- On Further Use : “BSNL 3g” Program will start automatically



4.Settings in BSNL 3g Program

Network
3G : HSDPA
2G: EDGE

BSNL 3G - Access Internet

Max Sent Speed: 42KBps Max Received Speed 48KBps
Sent Speed: 21KBps Received Speed: 48KBps
Sent: 2952KB Received: 6570KB
Duration: 00:04:21

==Connected==

Total Duration: 00:07:13 Total Usage: 9045KB
Total Sent: 2697KB Total Received: 6348KB

State	No.	Date	From	To	Duration	Sent	Received	Session's Tot
<input type="checkbox"/>	1	30/03/2010	5:02:51 PM	5:07:41 PM	00:04:50	2388KB	4188KB	6576KB
<input type="checkbox"/>	2	29/03/2010	11:51:37 ...	11:54:00 ...	00:02:23	309KB	2160KB	2469KB

Settings

Internet

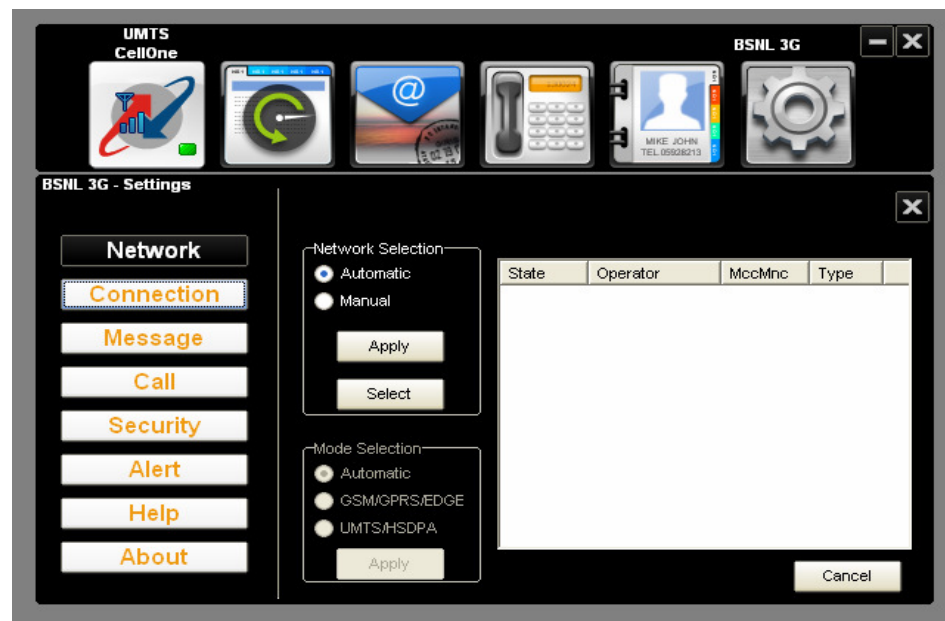
Connect /
Disconnect

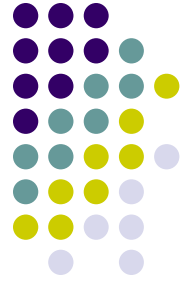
Info Bar



5. Click on Settings TAB

- Click Network Button...
- Network selection=Automatic
- Mode selection = Automatic
- Based on Network Available, Network Icon will show
HSDPA (3G)
EDGE (2G)





Connection settings

- Click Connection Button...
- Default APN is present named as “BSNL 3G”
- Select it & Press ‘ Set as Default’
- To create new Profile Name
- Press ‘Add’ make following settings
 - Name: Any
 - Number: *99#
 - APN: bsnlnet
 - Click “apply”
 - Click “Set as default

Connection settings



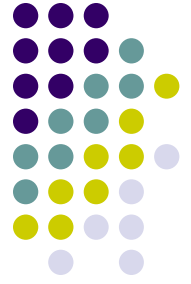
The screenshot shows the 'BSNL 3G - Settings' application. The main menu on the left includes: Network, Connection, Message, Call, Security, Alert, Help, and About. The 'Connection' menu is selected, displaying a list of APN profiles:

Profile	Action
BSNL 3G	Add, Delete, Edit
BSNL 3G SO	
BSNL_3G	

The 'Edit - BSNL_3G' dialog is open, showing the following fields:

Field	Value
Profile Name	BSNL_3G
Number	*99#
User Name	
Password	
APN	gprswest.cellone.in

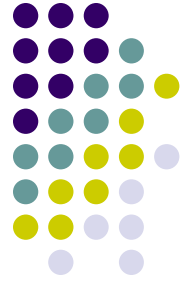
Buttons for 'Apply' and 'Cancel' are visible at the bottom of the dialog.



Click on Internet TAB

- Press connect Button
- Following will show on Info bar one after another
 - Port opened
 - Starting authentication
 - Authenticated
 - Connected
- You are now connected to Internet

Start surfing



- Open any Web browser i.e. Internet Explorer or Mozilla firefox etc.
- Give the desired web address & start surfing



To Disconnect

- Open BSNL 3g Progam (which is minimized)
- Press Disconnect Button

The screenshot shows the BSNL 3G mobile application interface. At the top, there are several icons: HSDPA CellOne, a speedometer, an email icon, a phone icon, a contact card for Mike John, and a gear icon. Below these is the 'BSNL 3G - Access Internet' section, which displays connection statistics: Max Sent Speed (11KBps), Max Received Speed (0KBps), Sent Speed (0KBps), Received Speed (0KBps), Sent (21KB), Received (0KB), and Duration (00:00:09). A 'Disconnect' button is visible in this section. Below this is the '==Connected==' section, which shows 'Total Duration: 00:15:27', 'Total Usage: 33385KB', 'Total Sent: 10530KB', and 'Total Received: 22855KB'. At the bottom, there is a table with columns for State, No., Date, From, To, Duration, Sent, Received, and Session's Tot.

State	No.	Date	From	To	Duration	Sent	Received	Session's Tot
<input type="checkbox"/>	1	30/03/2010	5:37:10 PM	5:37:22 PM	00:00:11	23KB	0KB	23KB
<input type="checkbox"/>	2	30/03/2010	5:34:11 PM	5:34:21 PM	00:00:10	32KB	0KB	32KB
<input type="checkbox"/>	3	30/03/2010	5:08:50 PM	5:16:43 PM	00:07:53	7778KB	16507KB	24285KB
<input type="checkbox"/>	4	30/03/2010	5:02:51 PM	5:07:41 PM	00:04:50	2388KB	4188KB	6576KB
<input type="checkbox"/>	5	29/03/2010	11:51:37 ...	11:54:00 ...	00:02:23	309KB	2160KB	2469KB



Remove the USB Modem

- Once you disconnected completely, press the Close button (Right hand upper corner **X** mark)
- Remove the USB Modem gently.